

MONTHLY MEMBERSHIP PROGRESS REPORT

LOCATION ENGLAND

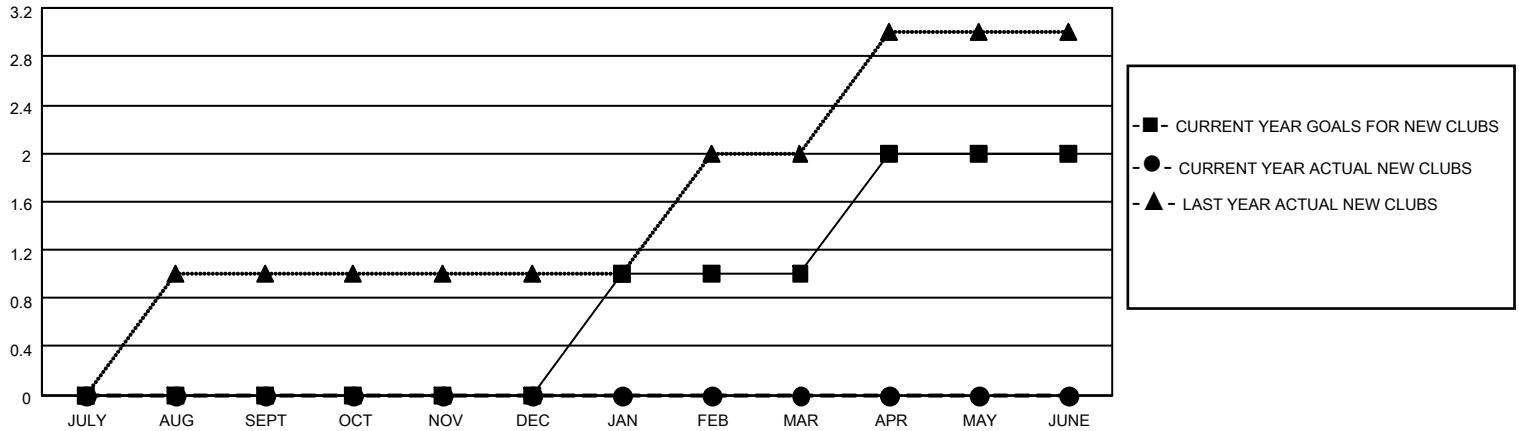
District 105CW

Results as of: 5/31/2022

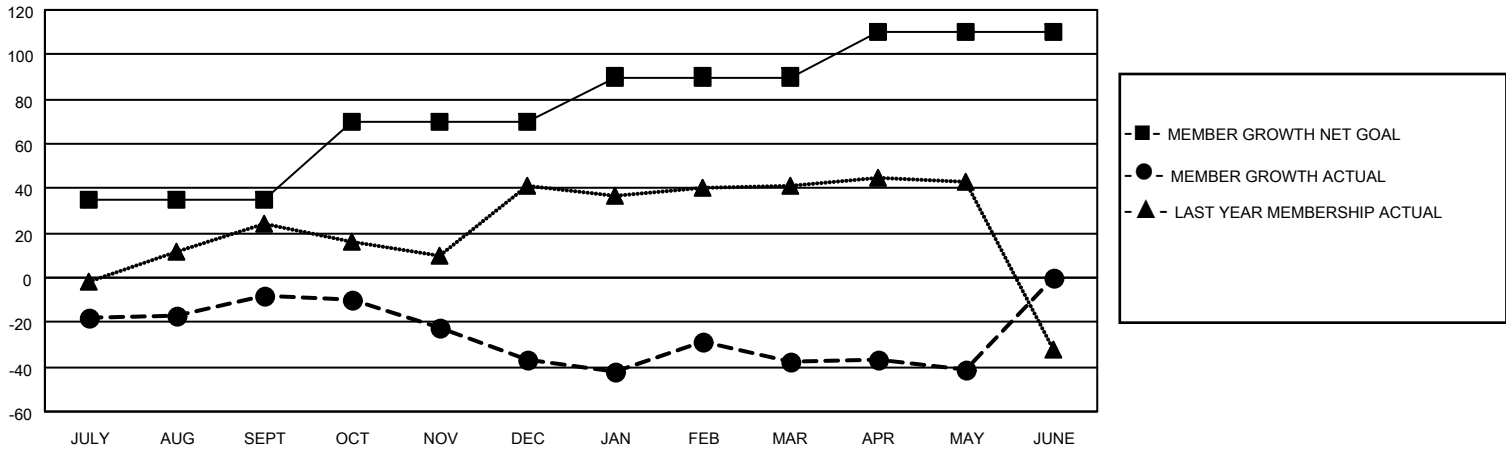
Clubs			
RESULTS FOR 2021-2022			
QUARTER	NEW CLUB GOAL	NEW CLUBS	DROPPED CLUBS
JULY/AUG/SEPT	0	0	0
OCT/NOV/DEC	0	0	2
JAN/FEB/MAR	1	0	0
APR/MAY/JUNE	1	0	0

Members			
RESULTS FOR 2021-2022			
QUARTER	MEMBER GROWTH NET GOAL	MEMBER GROWTH ACTUAL	DROPPED MEMBERS ACTUAL (including transfers)
JULY/AUG/SEPT	35	48	52
OCT/NOV/DEC	35	58	75
JAN/FEB/MAR	20	52	41
APR/MAY/JUNE	20	14	17

GOALS AND ACTUAL NEW CLUBS CUMULATIVE



GOALS AND ACTUAL MEMBERS CUMULATIVE



DROPPED CLUBS: 2

53 CLUBS OF 94 ADDED 1 OR MORE NEW MEMBERS

GENDER DISTRIBUTION

DROPPED MEMBERS

DECEASED	22
CLUB CANCELLED	0
OTHER	163
TOTAL	185

MALE	1,167 (71.64%)
FEMALE	461 (28.30%)
NON BINARY	1 (0.06%)
PREFER NOT TO ANSWER	0 (0.00%)

[CLICK HERE FOR CUMULATIVE MEMBERSHIP DATA](#)

TOTAL FAMILY UNIT MEMBERS	231
FAMILY MEMBERS PAYING HALF DUES	117